

## *Transparency of information delivers greater customer service and increased terminal efficiency*

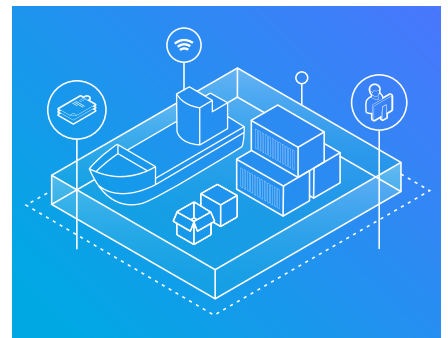
The Web Portal from Jade Logistics has been designed to provide transparency of information to the supply chain, freeing up port staff to focus on core operational tasks.

The Web Portal for Master Terminal™ provides your customers (such as truckers, consignors, consignees, shipping companies, custom and government officials) with access via a web browser to selected Master Terminal functionality.

Empower your customers by providing access to real-time information about their cargo and other relevant services.

### **Master Terminal's Web Portal features:**

- Empowered customers and improved customer experience
- Reduced overheads as your staff field fewer cargo-related enquiries
- Controlled access to information with two access levels: public and restricted
- Role-based security enables you to configure which functions are visible to each user
- Intuitive and user-friendly interfaces for ease of use
- Data validation and auditing



## About Master Terminal from Jade Logistics Group

Designed to handle all cargo types in one integrated system, Master Terminal is the world's leading terminal operating system (TOS) for mixed cargo ports.

Master Terminal is licensed at over 120 terminals worldwide, from vehicle terminals in Italy to steel terminals in North America.

Implementation is the key to success, and our implementation record is second to none in the industry. Our proven and robust methodology, partnership approach, thorough training and unrivaled implementation timeframes deliver tangible results fast.

Jade Logistics has been designing, building, and supporting innovative logistics software since 1993. Our experienced people understand the global logistics industry and are the foundation on which we build long-term relationships with our customers.

We have offices in New Zealand, Australia, USA, the Netherlands, the United Arab Emirates, and Indonesia.

For more information, visit us at [jadelogistics.com](http://jadelogistics.com)

## BENEFITS

### Improved customer experience

Give your customers the information they want, when they need it. Customers can track cargo, run reports, or enter bookings, release requests or pre-notes, independently and with ease.

Customers can set up automated email notifications for most cargo events allowing them to make smarter decisions, faster.

### Intuitive interfaces for ease of use

With our user-centric and intuitive screen designs, minimal training is required, allowing your customers to use the Web Portal straight away.

### Reduced overheads gain efficiencies

Fielding cargo-related calls can be a disruptive and time-consuming process.

Save time and money by providing your customers with access to the Web Portal and allowing them to search and access relevant information themselves, freeing up your staff to focus on core operational tasks.

### Controlled access to information

Two access levels define what information is visible to which users.

- **Public access:** enabled for anyone who needs cargo or vessel statuses. *Can be accessed from any device, smartphone, tablet, desktop.*
- **Restricted (logged in) access:** enabled for customers who need more functionality including pre-notes (pre-advice), release requests or reports. Credentials must be created by the terminal for the user to login. *Optimized for use on desktops.*

### Role-based security

Web Portal administrators with the appropriate privileges can configure which functions are visible to each user, and therefore the information users can view and/or modify.

External users have direct access to only the data they are authorized to view.

### On the move accessibility

The Web Portal gives your customers on the move, such as truck drivers, the ability to check cargo and vessel statuses directly from a mobile device.

### Data validation and auditing

All actions and changes to data via the Web Portal are subject to the same data validation, logging, auditing and security processes as the rest of Master Terminal.

## HARDWARE REQUIREMENTS

The Web Portal is optimized to run on any modern desktop.

The requirements for devices are:

- Microsoft® Windows® 7 or later (8.0 or later preferred), Mac OS 9.0 or later, or Android 6.0 or later.
- The latest version of Google Chrome, Firefox, or Microsoft® Edge web browsers.
- TCP/IP connectivity over Wi-Fi or cellular networks.

To learn more about the Web Portal, visit: [jadelogistics.com](http://jadelogistics.com)