

## *Increase driver productivity with our vehicle app*

Your reputation as a terminal operator depends on your efficiency at loading and unloading cargo. Quick turnaround times attract business and ultimately add to the bottom line.

It is important then that all of your staff have the right tools to be able to do their job in an effective and efficient manner.

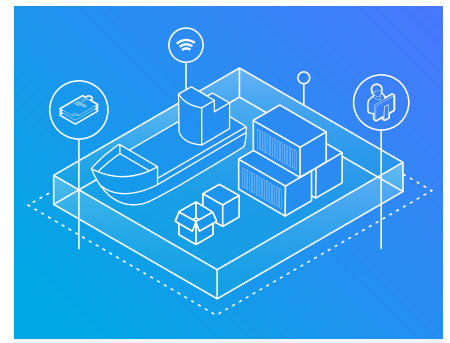
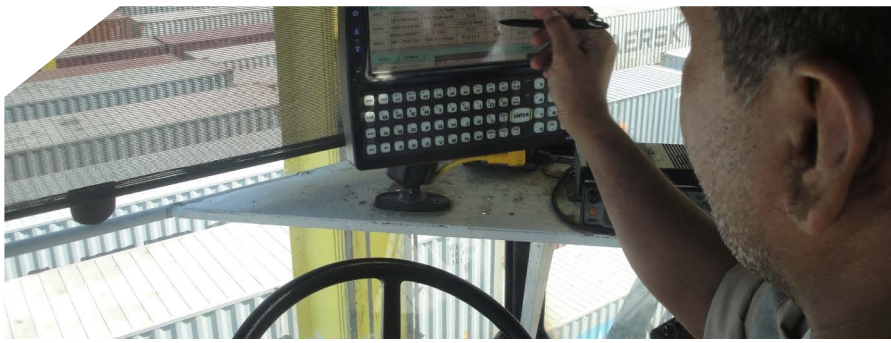
### **Technology at the front line**

Designed with your vehicle drivers in mind, and based on user feedback, our Vehicle app ensures those at the coalface of the port are provided with real-time information so they can seamlessly perform their work.

Featuring an intuitive and easy to navigate interface with large buttons, the Vehicle app is user-friendly and quick to learn, regardless of the user's technical ability. The ease of use of the app and intuitive interfaces reduces traditional training time.

### **Master Terminal's Vehicle app benefits:**

- A range of different modes are available to suit your terminal's style of operation
- Modern and intuitive user interface ensures fast learning times
- Transactions are accurately recorded, ensuring no revenue leakage
- Make real-time business decisions with up-to-date data
- Ensure driver productivity is at its maximum
- Automatic updates



### A mode to suit your style

A number of different modes are available to your vehicle drivers depending on what access levels you grant them.

- **List view:** The default mode where a driver is shown a list of cargo that they have been assigned to move.
- **Get next:** The driver is informed as to what cargo they should pick up on a one-by-one basis.
- **Discharge:** Used for when cargo is discharged from a ship. This allows the driver to move cargo that has been moved by a crane to the quay.
- **Move by type:** Vehicles are directed to move cargo by its type rather than by ID.
- **Driver moves:** Allows the driver to initiate the moving of cargo. For instance if they need to move cargo that is in the incorrect position.

### Feature-rich

Depending on the task, and the drivers preference, various views are available including a graphical view and a list view. Among other features users can toggle night mode, select twin-mode and customize the app to display the most important information to them in the most prominent areas on screen.

The Vehicle app is updated at the server level. For you this means eliminating the need to set aside time for disruptive software updates. All updates are transparent to the users.

### Greater record keeping equals greater revenue

Paperwork is prone to being lost or incorrect, by capturing real-time data on mobile devices as they happen, you have an auditable record of every event. For you this ensures that there is no revenue leakage. By electronically recording each transaction you can ensure customers are charged accurately.

### Cost-effective and a better process

The Vehicle app is web-based, and will work on any internet-capable device with the latest version of Google Chrome, Firefox, or Microsoft® Edge web browsers. The result of this is that you are no longer bound to expensive hardware, you have full flexibility on what you use.

Admin costs are also saved when information is recorded in real-time on the yard. There is no need for an office staff member to type out what a driver on the yard has recorded.

### Make business decisions fast

Recording events as they happen leads to real-time KPI monitoring. With greater visibility over your yard you have the ability to act quickly and make decisions on the fly without having to wait for reports.

To learn about handheld apps for Master Terminal, visit: [jadelogistics.com](http://jadelogistics.com)

## About Master Terminal from Jade Logistics Group

*Designed to handle all cargo types in one integrated system, Master Terminal is the world's leading terminal operating system (TOS) for mixed cargo ports.*

*Master Terminal is licensed at over 120 terminals worldwide, from vehicle terminals in Italy to steel terminals in North America.*

*Implementation is the key to success, and our implementation record is second to none in the industry. Our proven and robust methodology, partnership approach, thorough training and unrivaled implementation timeframes deliver tangible results fast.*

*Jade Logistics has been designing, building, and supporting innovative logistics software since 1993. Our experienced people understand the global logistics industry and are the foundation on which we build long-term relationships with our customers.*

*We have offices in New Zealand, Australia, USA, the Netherlands, Switzerland, the United Arab Emirates, and Indonesia.*

*For more information, visit us at [jadelogistics.com](http://jadelogistics.com)*